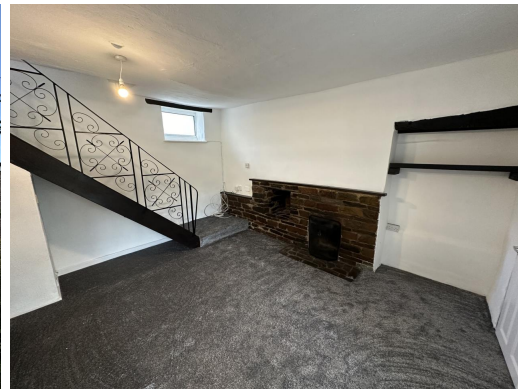


# Francis Stuart Lettings Ltd



## Wembury Road

, Plymstock, Devon, PL9 8HG

## Rental £900 pcm

2 bedroom Cottage available 05 June 2026

Office G52, Kilworthy Park, West Devon & Cornwall,  
PL19 0BZ

[wdc@francis-stuart.co.uk](mailto:wdc@francis-stuart.co.uk)

## 01822 243777

### Opening Times

Mon 09.00 - 17.00; Tues 09.00 - 17.00

Wed 09.00 - 17.00; Thurs 09.00 - 17.00

Fri 09.00 - 17.00; Sat Closed; Sun Closed

# Francis Stuart Lettings Ltd

\* Unfurnished

## Situation

Francis Stuart are delighted to offer this charming two-bedroom mid-terraced cottage, situated in the sought-after residential area of Elburton and ideally suited to a single occupant or couple. The accommodation comprises a dining area, lounge, kitchen, bathroom and two bedrooms. The property benefits from gas central heating and double glazing, providing comfortable and practical living throughout. Conveniently positioned close to Elburton village and local amenities, the property also offers good transport links, including regular bus services towards Plymouth city centre. An internal viewing is highly recommended to fully appreciate the charm and potential this cottage has to offer.

## Accommodation

All measurements are approximate.

## Further Information

The deposit required is £1,038

The landlord is willing to rent this home to Employed, Self Employed, Unemployed, Student, Own Means, Retired, Company, Council

The landlord is willing to rent the property for a minimum of 6 Months and a maximum of 6 Months

## Energy Performance Certificates

This home's performance is rated in terms of the energy use per square metre of floor area, energy efficiency based on fuel costs and environmental impact based on carbon dioxide (CO<sub>2</sub>) emissions.

Energy Efficiency Rating		Current	Potential
Very energy efficient - lower running costs	A		
(92-102)	B		
(81-91)	C		
(69-80)	D		
(55-68)	E		
(39-54)	F		
(13-38)	G		
Not energy efficient - higher running costs			

England & Wales EU Directive 2002/91/EC

The energy efficiency rating is a measure of the overall efficiency of a home. The higher the rating the more energy efficient the home is and the lower the fuel bills will be.

Environmental Impact (CO <sub>2</sub> ) Rating		Current	Potential
Very environmentally friendly - lower CO <sub>2</sub> emissions	A		
(92-102)	B		
(81-91)	C		
(69-80)	D		
(55-68)	E		
(39-54)	F		
(13-38)	G		
Not environmentally friendly - higher CO <sub>2</sub> emissions			

England & Wales EU Directive 2002/91/EC

The environmental impact rating is a measure of a home's impact  
Creation Date: 05/06/2026

Property Ref: inst-2704

## IMPORTANT INFORMATION

For clarification, we wish to inform the prospective tenant that we have prepared these details as a general guide. The agent has not carried out a detailed survey nor tested the services, appliances, or specific fittings (unless otherwise stated), and no warranty can be given as to their condition. All room measurements are taken at floor level. We strongly recommend that all the information which we provide about the property is verified by yourself and your advisers. The contents of this publication are © Francis Stuart Lettings Ltd, 2026. Francis Stuart Lettings Ltd Registered in England and Wales No. 14214296