



Francis Stuart

HMOs • Lettings • Investments

Copenhagen Court The Millfields Craige Drive PL1 3FZ

£200,000

🛏 2 🚿 1 🚗 1



Guide Price £200,000 - £210,000

Set behind the original 18th Century stone walls of Plymouth's former Royal Naval Hospital, this exceptional two-bedroom first floor apartment occupies a sought-after position within Copenhagen Court, part of one of the city's most prestigious gated developments. Benefiting from lift access and allocated parking, the property combines the character, history and architectural charm The Millfields is renowned for with the convenience of modern living. It is easy to see why homes within this unique community remain so highly sought after.

Beautifully manicured gardens, mature trees, secure gated access, 24-hour security and a genuine sense of community create an environment that feels a world away from the hustle and bustle of everyday life.

Yet despite its peaceful and secluded setting, Royal William Yard, Devil's Point, Mount Edgumbe, Plymouth Hoe and the city centre are all within easy reach.

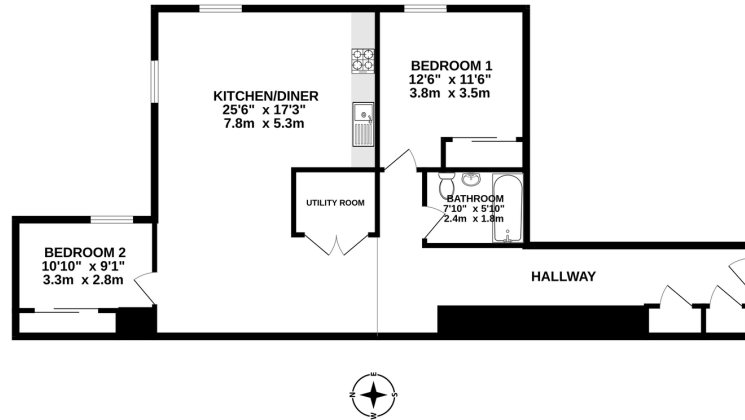
Extending to approximately 878 sq.ft. (81.6 sq.m.) and benefiting from a 999-year lease granted in 2016, this spacious apartment offers considerably more living space than many modern apartments and has been thoughtfully designed to provide both comfort and practicality.

At the heart of the home is an impressive 25ft open-plan kitchen, dining and living space, creating a wonderful environment for everyday living, entertaining family and friends or simply relaxing at the end of a busy day. The room enjoys an abundance of natural light and offers ample space for both dining and lounge furniture without compromise.

The accommodation further comprises two double bedrooms benefiting from built-in storage, alongside a well-appointed bathroom and a separate utility room, providing valuable additional storage and helping to keep the main living areas uncluttered. Whether you are looking to downsize without compromise, searching for a secure lock-up-and-leave home, relocating to

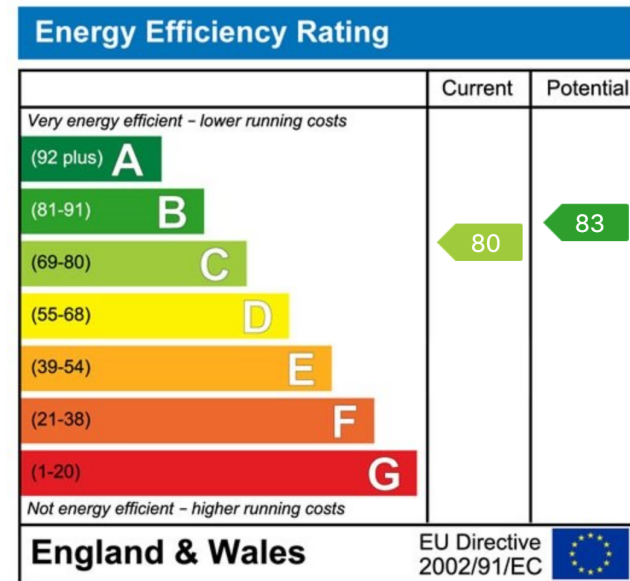


GROUND FLOOR
878 sq.ft. (81.6 sq.m.) approx.



TOTAL FLOOR AREA: 878 sq ft. (81.6 sq.m.) approx.
While every attempt has been made to ensure the accuracy of the floorplan contained here, measurements of doors, windows, rooms and any other items are approximate and no responsibility is taken for any error, omission or mis-statement. This plan is for illustrative purposes only and should be used as such by any prospective purchaser. The services, systems and appliances shown have not been tested and no guarantee as to their operability or efficiency can be given.
Made with Metrepro 12/2016

- Spacious two Bedroom first floor apartment with Parking and Lift Access
- Impressive 25ft open-plan kitchen, dining and living space
- 999-year lease
- One of Plymouth's most prestigious gated developments
- Approx. 878 sq.ft. (81.6 sq.m.)
- 24-hour security and gated access
- Beautifully maintained and manicured communal gardens
- Moments from Royal William Yard, Devil's Point and Mount Edgumbe
- Sought-after Copenhagen Court location
- No Onward Chain



40 Mannamead Road, Mutley, Plymouth, PL4 7AF

01752 710047 | www.francis-stuart.co.uk | selling@francis-stuart.co.uk